

MD SERIES

MULTI KIT PULVERIZER
DEMOLITORE MULTI KIT
PINCE MULTI KIT
MULTIPROZESSOREN
MULTIPROCESADOR

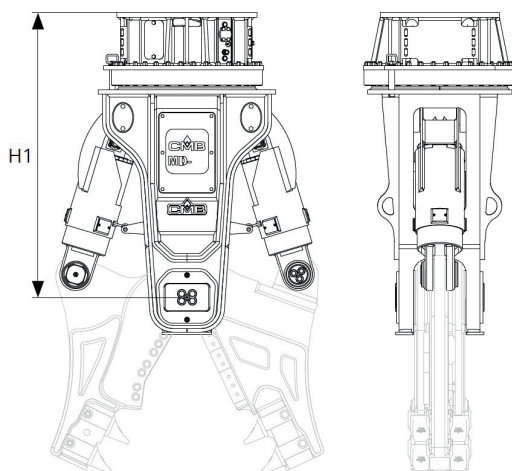
- ◆ **BUILT IN HARDOX AND STRENX**
COSTRUITO IN HARDOX E STRENX
- ◆ **MULTI PURPOSE WITH INTERCHANGEABLE JAWS**
CHELE INTERCAMBIABILI CON DIVERSE FINALITÀ
- ◆ **FULLY PROTECTED HYDRAULIC COMPONENTS**
IDRAULICA COMPLETAMENTE PROTETTA
- ◆ **SPEED VALVE**
VALVOLA DI VELOCITÀ



MD is a multi-kit attachment with interchangeable jaws. On the main frame is possible to set different type of jaws that allow to face every situation in the demolition field.

L'MD è un'attrezzatura modulare altamente funzionale. Sulla struttura principale è possibile montare diversi tipi di kit che permettono di affrontare qualsiasi situazione nel campo delle demolizioni.

- | | |
|------------------------------|---------------------------------------|
| ◆ Versatility | ◆ Versatilità |
| ◆ Hardened pins and bushings | ◆ Perni temprati e boccole in acciaio |
| ◆ Reinforced rotation | ◆ Motore di rotazione rinforzato |
| ◆ Adjustable speed rotation | ◆ Regolazione velocità di rotazione |



Drain line advised
Drenaggio consigliato
* Model without interchangeable teeth
* Modello senza denti intercambiabili

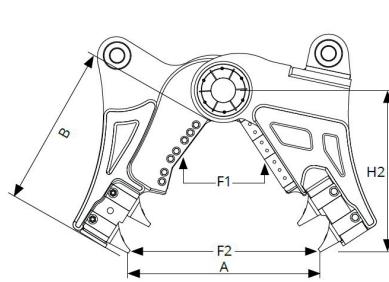
MD series		MD16	MD22	MD28	MD35
BODY WEIGHT	kg	980	1590	1950	2350
EXCAVATOR WEIGHT	ton	15 / 20	21 / 27	28 / 40	35 / 50
H1	mm	1230	1550	1600	1870
EXCAVATOR WORKING PRESSURE	bar	350	350	350	350
EXCAVATOR OIL FLOW	l/min	140 / 180	180 / 250	200 / 280	250 / 320
ROTATION WORKING PRESSURE	bar	120	120	120	120
ROTATION OIL FLOW	l/min	15	15	15	20
SPEED VALVE		YES	YES		YES

Attachment-excavator couplings data are for information only, always check load diagram of the machine.

I dati relativi agli accoppiamenti attrezzatura escavatore sono da considerarsi puramente indicativi, controllare sempre i diagrammi di carico della macchina operatrice

CD KIT

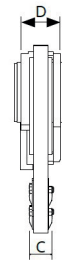
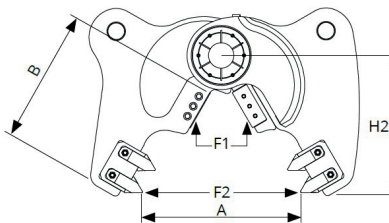
COMBI



CD kit	CD16	CD22	CD28	CD35
BODY WEIGHT	kg 980	1590	1950	2350
KIT WEIGHT	kg 640	700	1050	1230
TOTAL WEIGHT	kg 1620	2290	3000	3580
A	mm 600	750	840	980
B	mm 650	770	920	1050
C	mm 90	100	110	130
D	mm 240	280	330	360
BLADE	mm 375	375	445	520
H2	mm 600	750	990	1150
H tot	mm 1830	2300	2590	2920
F1	ton 150	190	330	350
F2	ton 60	70	120	120
Ø MAX ●	mm 40	50	60	70

CC KIT

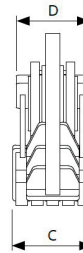
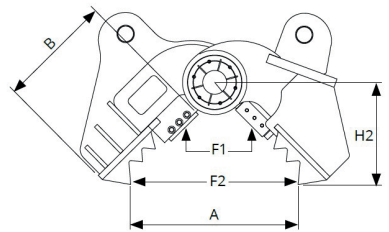
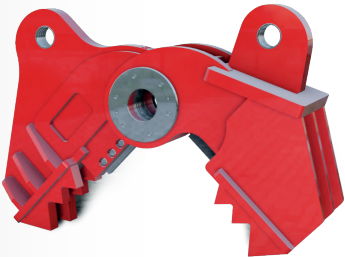
PRIMARY DEMOLITION



CC kit	CC16	CC22	CC28	CC35
BODY WEIGHT	kg 980	1590	1950	2350
KIT WEIGHT	kg 540	700	900	1100
TOTAL WEIGHT	kg 1520	2290	2850	3450
A	mm 710	800	880	980
B	mm 520	640	760	890
C	mm 90	100	110	130
D	mm 240	280	330	360
BLADE	mm 375	375	445	520
H2	mm 520	600	800	910
H tot	mm 1750	2150	2400	2780
F1	ton 160	200	260	400
F2	ton 60	75	87	110
Ø MAX ●	mm 40	50	60	70

CF KIT

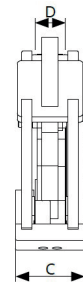
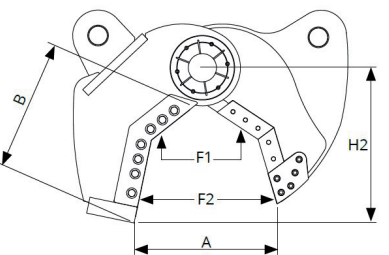
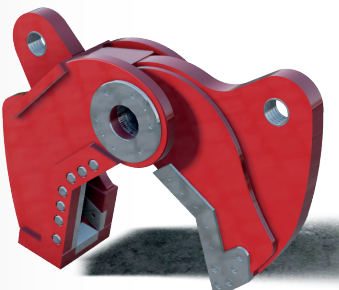
DEMOLITION



CF kit	CF16	CF22	CF28	CF35
BODY WEIGHT	kg 980	1590	1950	2350
KIT WEIGHT	kg 560	780	920	1120
TOTAL WEIGHT	kg 1540	2370	2870	3470
A	mm 600	710	840	920
B	mm 500	600	750	800
C	mm 260	290	340	380
D	mm 260	290	340	380
BLADE	mm 375	375	445	520
H2	mm 550	630	820	880
H tot	mm 1780	2180	2420	2750
F1	ton 160	200	245	380
F2	ton 62	75	85	130
Ø MAX ●	mm 40	50	60	70

CR KIT

SHEAR



CR kit	CR16	CR22	CR28	CR35
BODY WEIGHT	kg 980	1590	1950	2350
KIT WEIGHT	kg 570	660	940	1140
TOTAL WEIGHT	kg 1550	2250	2890	3490
A	mm 380	420	470	520
B	mm 490	600	740	790
C	mm 260	290	340	380
D	mm 190	250	290	350
BLADE	mm 440	520	640	675
H2	mm 540	650	850	900
H tot	mm 1900	2050	2120	2250
F1	ton 160	200	230	300
F2	ton 70	85	95	125
Ø MAX. ●	mm 40	50	60	70
■	mm 35	42	50	58
—	mm 10,5	13	16,5	21
I	mm 200	270	330	360
I	mm 160	200	240	260