



World leader in vehicle
de-pollution technology



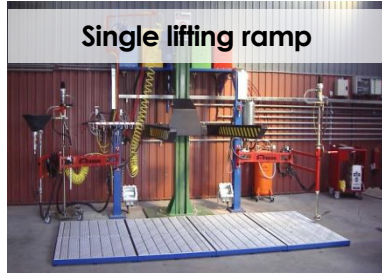
SEDA Catchment Area

N-527213 | N-527215

Catchment area for drainage stations



Galvanised catchment areas ensure a clean and safe workplace. This increases safety and prevents any leaking of hazardous substances into the soil or in other areas of the station.



Single lifting ramp



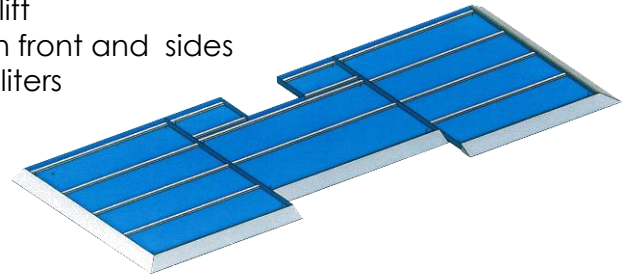
Static ramp (USA version)



Static ramp (Standard)

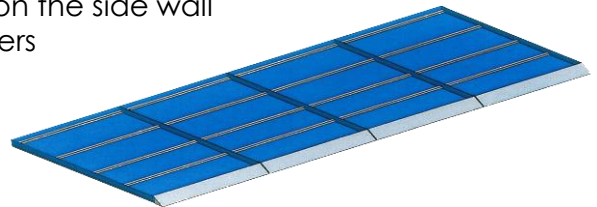
Catchment area set for lifting and tilting ramp (Type B; three parts)

Outer dimensions: 5153 x 1950 mm
Cut-out for base frame
Mountings for fork-lift
Collision protection front and sides
Entire volume: 160 liters



Catchment area set for single lifting ramp (Type C1; four parts)

Outer dimensions: 4884 x 2348 mm
Collision protection on the side wall
Entire volume: 215 liters



+ Your benefits

- ✓ Optimal soil condition
- ✓ Easy cleaning due to removable gutters
- ✓ Stable and slip resistant grates
- ✓ Earthing device
- ✓ Powder coating for an optimal rust protection

TECHNICAL DETAILS

Filling level:	20mm
Total height:	73mm
Material:	S235JR
Lifting capacity:	43 kN/m ² (with evenly distributed load) 6,3 kN (with point loading on 150x150 mm)

ORDER INFORMATION

N-527213 SEDA Catchment area Type B

N-527215 SEDA Catchment area Type C1



SEDA-Umwelttechnik GmbH

Schwendter Str. 10 / A-6345 Kössen/Tirol/Austria
UID-Nr.: ATU56621622 / FB-Nr.: FN 231790 v / FB-Gericht: Innsbruck
Certified company DIN EN ISO 9001

P: +43 5375 6318-0
F: +43 5375 6318-9
E: info@seda.at
Web: www.seda.at