



World leader in vehicle
de-pollution technology



SEDA DrainBox P-50140



The new cost effective SEDA ELV de-pollution system is the ideal solution for automotive recyclers with limited space.

The DrainBox fulfills requirements with its compact size for the needs of small recyclers and fits perfectly into existing processes and automations. It consists of a vehicle rack, a housing with 6 double diaphragm pumps for all fluids and filters as well as a TankDrillingMachine and a swingarm with an oil funnel.

Optionally, there is the station with height-adjustable vehicle rack holder and add two catchment areas with grids. In addition, the DrainBox can be supplemented with a shock absorber drilling machine, a HoseGun, an airprocessing unit or a GearboxDrillingMachine.

Your benefits:

- ✓ Combination of vehicle rack and de-pollution system
- ✓ Space-saving and clean
- ✓ Ready for immediate use thanks to the preinstalled technology
- ✓ Integrated workbench
- ✓ Easiest use
- ✓ Flexible and safe
- ✓ Explosion proof (ATEX)



SEDA-Umwelttechnik GmbH

Schwendter Str. 10 / A-6345 Kössen/Tirol/Austria
UID-Nr.: ATU56621622 / FB-Nr.: FN 231790 v / FB-Gericht: Innsbruck
Certified Company DIN EN ISO 9001

P: +43 5375 6318-0
F: +43 5375 6318-9
E: info@seda.at
Web: www.seda-international.at



World leader in vehicle de-pollution technology



SEDA DrainBox P-50140

Vehicle rack with integrated pump system



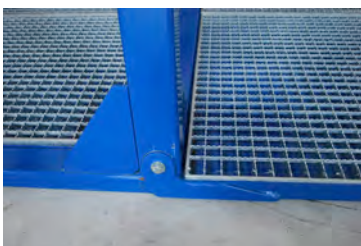
The individual components of the system are each configured so that they form a closed system reducing leakage and vapour output. A safe working system operated by compressed air.



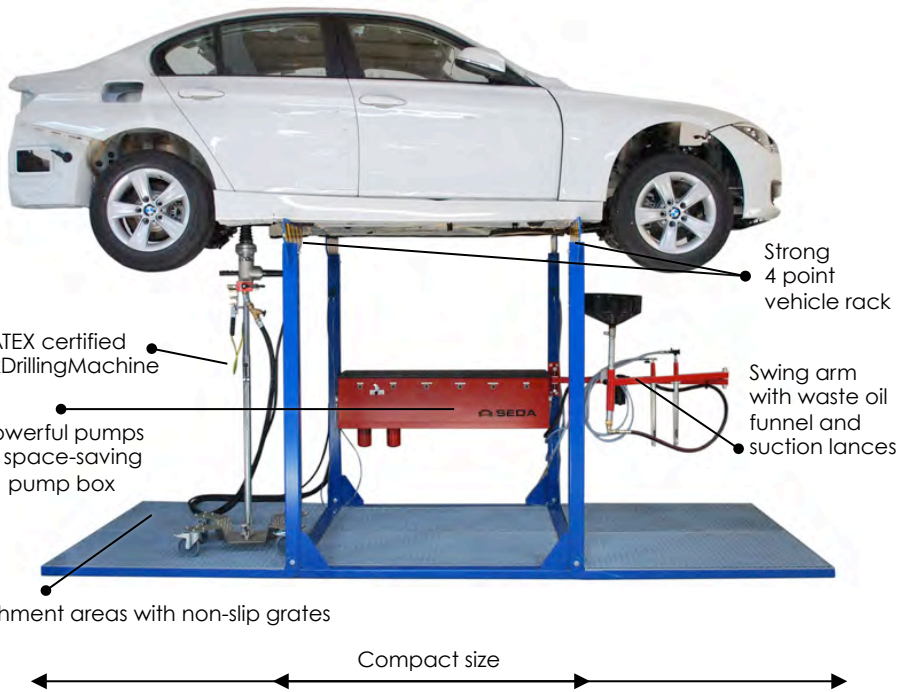
Also available without the two extra-sumps



Transport in a compact form



Foldable catchment areas



TECHNICAL DETAILS

Air requirements: max. 7,5 bar – 410 l/min
Drainagetime: app. 10-20 min/car*
Fluid drainage: Petrol/Diesel: 14 l/min
 Waste oil: 8 l/min
 Coolant fluid: 5 l/min
 Washer fluid: 5 l/min
 Brake fluid: 1 l/min
Loading capacity: 2000 kg
Dimension DrainBox Plus: 4310 x 1940 x 1940 mm
Dimension DrainBox: 1600 x 1940 x 1940 mm

ORDER INFORMATION

P-50140 SEDA DrainBox ELV drainage station
P-50141 SEDA DrainBox Plus ELV drainage station with 2 additional foldable catchment areas

* It depends on the car setup and in-plant flow of operations.

SEDA-Umwelttechnik GmbH

Schwendter Str. 10 / A-6345 Kössen/Tirol/Austria
UID-Nr.: ATU56621622 / FB-Nr.: FN 231790 v / FB-Gericht: Innsbruck
Certified company DIN EN ISO 9001

P: +43 5375 6318-0
F: +43 5375 6318-9
E: info@seda.at
Web: www.seda-international.com